

Program manager

The Program manager offers both normal and compound programs which can be added to the hearing aid by a simple click.

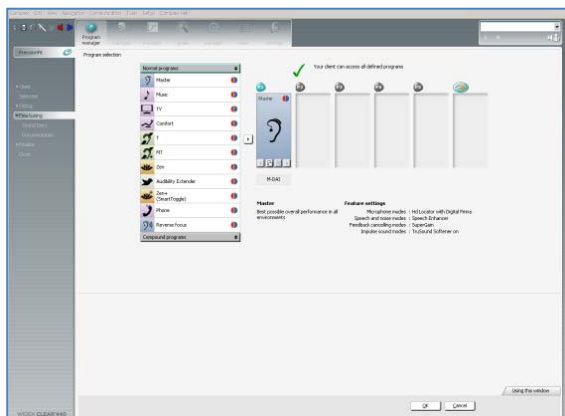


Fig. Normal programs in Compass V5.

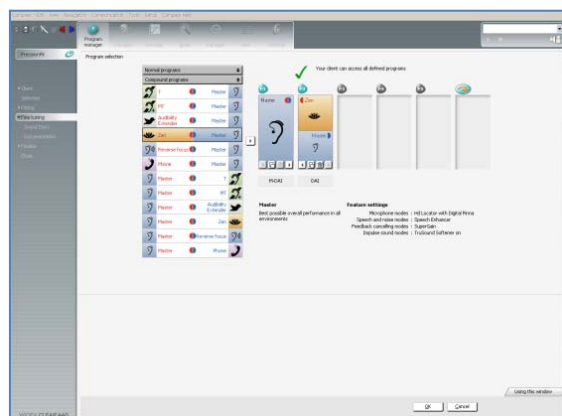


Fig. Compound programs in Compass V5.

A compound program consists of two different programs – one in either hearing aid - and is defined and listed in Compass. These programs can only be used in binaural fittings.

Master	Audibility Extender
Master	Telecoil
Master	Telecoil / acoustic
Master	Zen
Master	Reverse focus
Master	Phone

Fig. The compound programs combine the most common programs.

A new listening program - Reverse Focus - will effectively reverse the Locator pattern to achieve optimum focus on sounds from behind. The Reverse Focus program is available both as a normal program synchronised between the two hearing aids and as part of a compound program with Master on one ear and Reverse Focus on the other.

New Basic/Expanded gain matrix

A new option in Compass V5 is the choice between Basic and Expanded gain matrix in the Fine tuning window. The default mode is Basic – showing 4 channels. By a simple click the matrix shows all channels in the hearing aid.



Fig. Basic gain matrix.

Fig. Expanded gain matrix.

In the Basic as well as in the Expanded gain matrix it is possible to adjust the input levels in one channel without influencing the others. It is also possible to adjust the settings of several parameter fields simultaneously.

Furthermore, target gain for a specific channel for a specific program can be viewed.

InterEar features

The InterEar features help optimise the sound processing in a binaural fitting and make the control of two hearing aids easier.

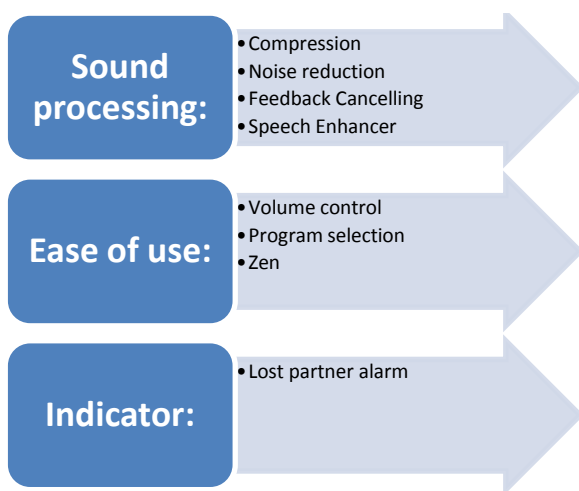


Fig. The InterEar functionalities can be divided into three categories.

All InterEar features use WidexLink to coordinate and synchronise two hearing aids and are only relevant when two hearing aids have been fitted. The hearing aids are automatically paired, and many of the settings will be the same when the InterEar features are enabled.

It is possible to handle the InterEar functionalities in the binaural fitting by turning on or off the different features based on your client's needs.



Fig. The InterEar functionalities in Compass V5.

Dex matching

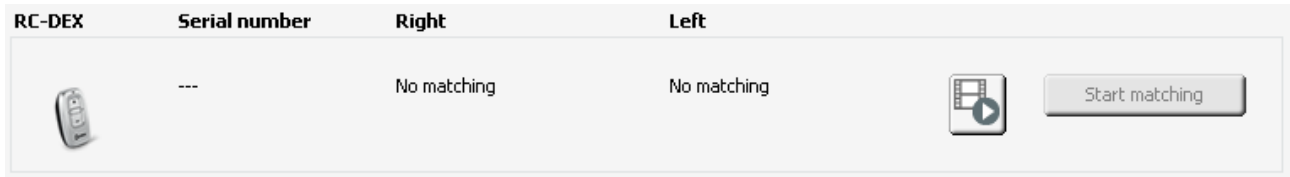


Fig. Matching an RC-DEX

Three new DEX devices are introduced with CLEAR440. The matching procedure in Compass V5 is simple, and you just have to follow the directions on the screen to perform it. If you need to learn how to match a DEX, simply open the instruction tool to see a short animation.